

Following are the solutions for displaying Indian Languages correctly

- a. You should first enable/install the Indic (Windows Files for Indian Language Display).
- b. Below are the supported Operating Systems that allows you to display Indian Language Text:

Languages Operating System

Windows XP and above

Enable Indic for Windows XP

1. Go to Start->
2. Control Panel>
3. Regional & Language Options>
4. Languages Tab-> (Tick the Install files for complex scripts...)
5. And click OK.



2. Click OK (Figure Below).



3. You will require the Windows XP CD to enable Indic.

When you insert the XP Cd in your CD rom installation shall automatically start.

Now, Windows wants to restart to make changes.

With this procedure, it will install INSCRIPT, MANGAL and Arial Unicode MS Keyboard driver and font in your system.

After Restart the System do the same as above:

Go to Control Panel

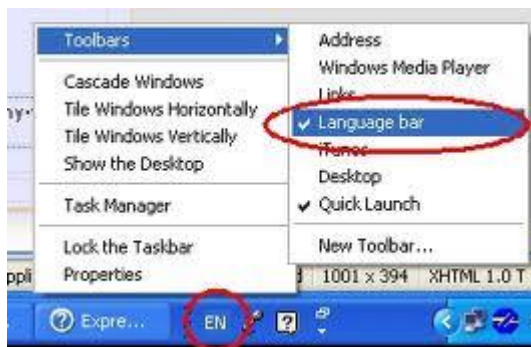
>> Regional and Language Option

>> Click on Language Tab

>> Click on Details

>> Click on Add for Selection of the language of your choice

>> From System tray Click on EN and for typing select language



For Windows7/Vista

Go to Control Panel

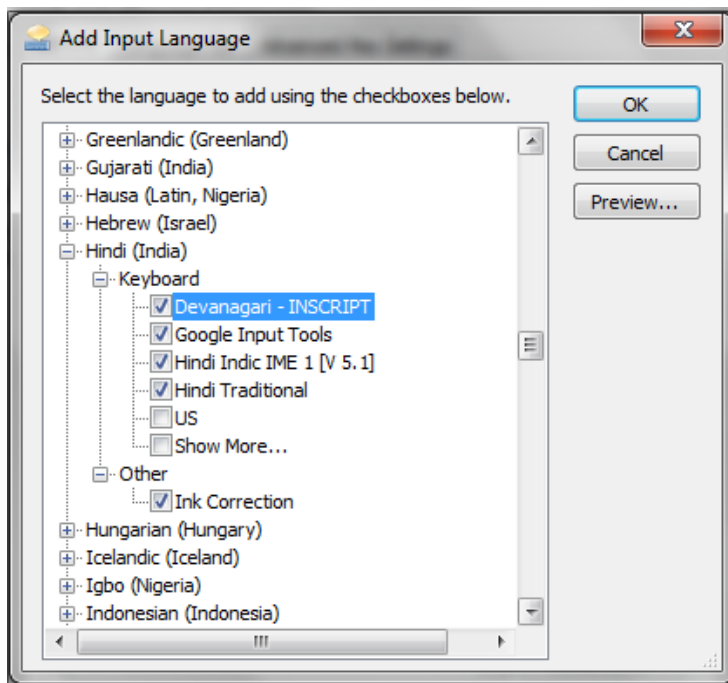
>> Regional and Language Option

>> Select "India" in format

>> Click on Keyboard & Language Tab

>> Click on Change Keyboard

>> Click on Add for Selection of the language of your choice



>> Click OK.

>> From System tray Click on **EN** and for typing select language

If you are unable to type with "Hindi Traditional" or "Devanagari In-script" Keyboard please download the "Hindi Font" from the Website.

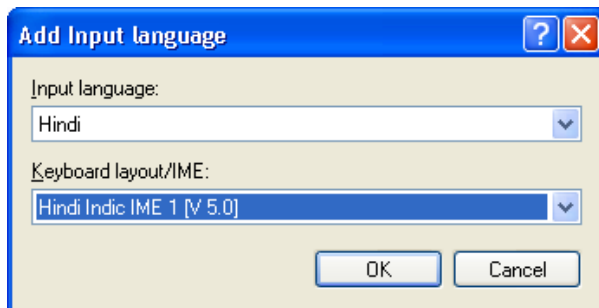
Installation

1. Unzip the Hindi IME Setup.zip downloaded from the website.
2. Run Hindi Setup.exe and follow the instructions in the setup program.
3. Reboot your system.

Adding Input Locale

1. Go to Control Panel
 - >> Regional and Language Option
 - >> Click on Language Tab
 - >> Click on Details
 - >> Click on Add for Selection of the language of your choice
2. Select Keyboard under HI in Installed Services. Click **Add**.

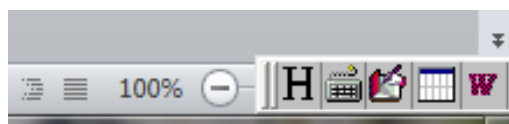
3. Select Hindi in Input Language, check Keyboard Layout /IME box. And Select Indic IME 1.



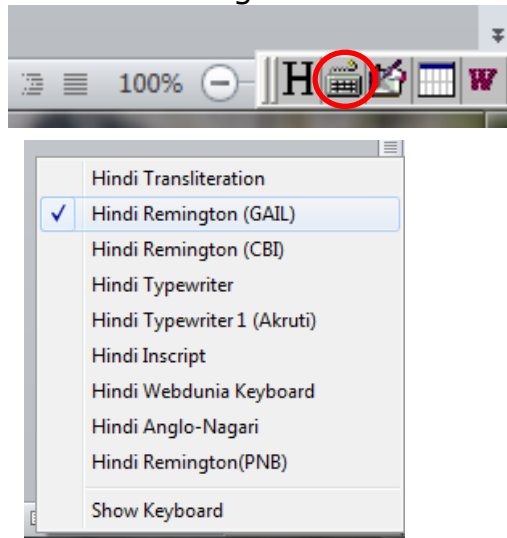
4. Click OK.

How to Use Indic IME:

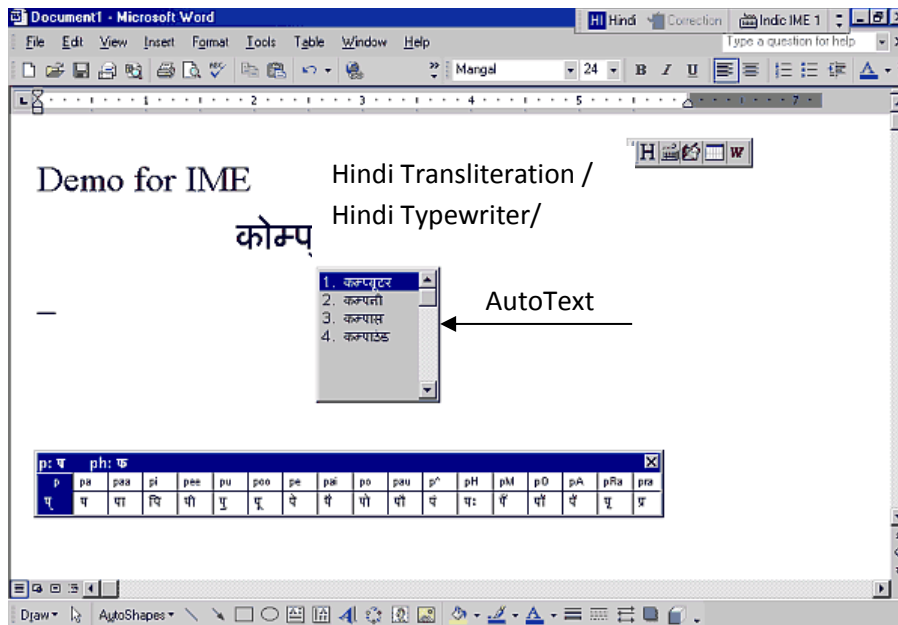
1. After installing Indic IME start any Office application, WordPad or Notepad.
2. Click the Language Indicator located in the System Tray on the right side of the Windows taskbar, and click to select "Indic IME 1" from the shortcut menu that appears.



3. Click the keyboard icon for Change the desired keyboard.



4. Start typing in Hindi.



Type of Keyboard:

- **Hindi Transliteration** – Using phonetic typing, the user can type his message in Roman using the Standard English keyboard, which is transliterated on-the-fly to Hindi. It works on the logic of phonetics and is most effective when you spell the word the way it is spoken.
- **Hindi Remington**- Hindi Remington is usual Remington Hindi typewriter Typing can be done as per the key mapping of the Remington keyboard.

- **Hindi Typewriter-** Another Hindi keyboard used in typing. Typing can be done as per the key mapping of Hindi typewriter keyboard.
- **Inscript Keyboard-** Another Hindi Keyboard where the user types the basic characters in sequence and an underlying logic determines that which of these characters have to be combined and substituted to form a glyph.
- **Webdunia Keyboard-** Another Hindi keyboard used in typing. Typing can be done as per the key mapping of Webdunia Keyboard.
- **Anglo Nagari Keyboard-** Another Hindi keyboard used in typing. Typing can be done as per the key mapping of Webdunia Keyboard.